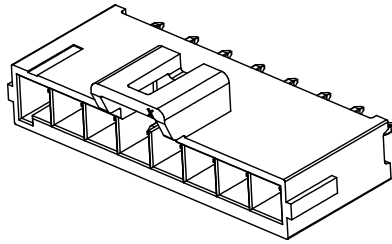


仅供参考

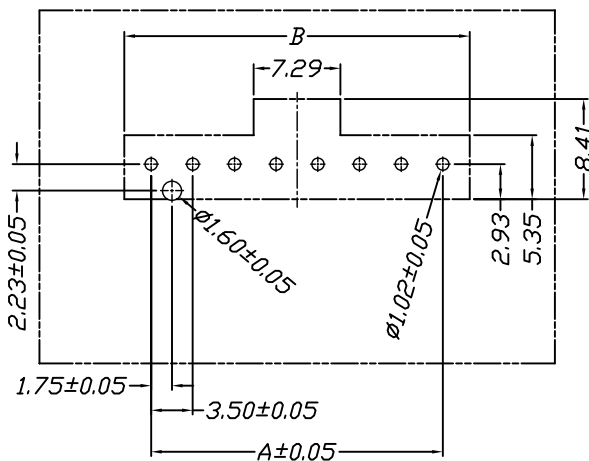
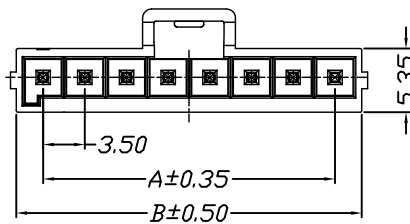
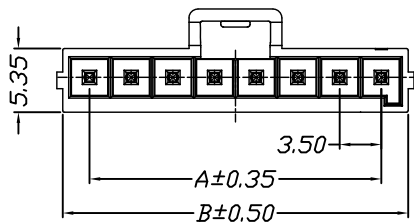
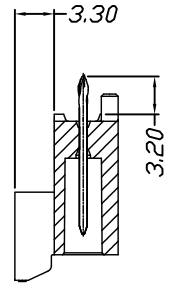
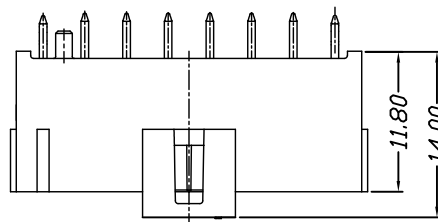
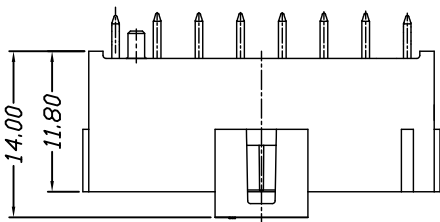
REV.	REVISION RECORD	DATE
A0	新图面发行	2017.06.16



Specifications:  
 Voltage Rating : 250V AC/DC  
 Current Rating : 7A AC,DC  
 Withstand Voltage : 1500V AC/minute  
 Contact Resistance : 40mΩ(MAX.)  
 Insulation Resistance : 1000MΩ(MIN.)  
 Temperature Range : -40°C~+120°C

STP43501W00-NP\*-B3-\*\*

STP43501W01-NP\*-B3-\*\*



P.C.B. LAYOUT

Poles	Dimensions	
	A	B
2P	3.50	8.00
3P	7.00	11.50
4P	10.50	15.00
5P	14.00	18.50
6P	17.50	22.00
7P	21.00	25.50
8P	24.50	29.00

Material	Color	PIN Material
LCP	Black	Brass/Tin-plated

	GENERAL TOLERANCES		SCALE: 1:1	NAME	DATE	深圳市思拓展电子有限公司 SHENZHEN SINOTOP ELECTRONICS CO., LTD 公司网址: www.szsituo.cn 公司电话: 0755-23765350 邮箱: 2850175982@qq.com 公司传真: 0755-23765341	PART NO: STP43501W0X-NPX-B3-XX	
	LINEAR	ANGLES					APPROVED	DWG. NO:
	0.0±0.35	X° REF±6°	DESIGNER					
	UNIT: MM	0.00±0.25	X° ±3°	TITLE:	REV: A0		SHEET: 1/1	
SIZE: A4	0.000±0.15	X° X'±2°	DRAWN	肖坤权	2017.06.16	3.50mm Pitch 180° Single Wafer DIP Type		