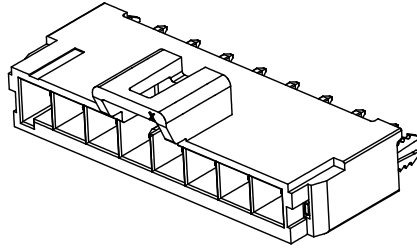


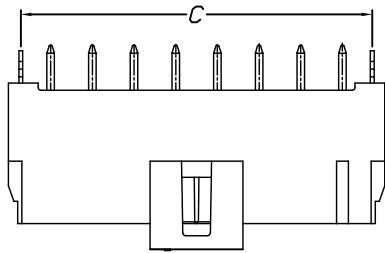
仅供参考

REV.	REVISION RECORD	DATE
A0	新图面发行	2017.06.16

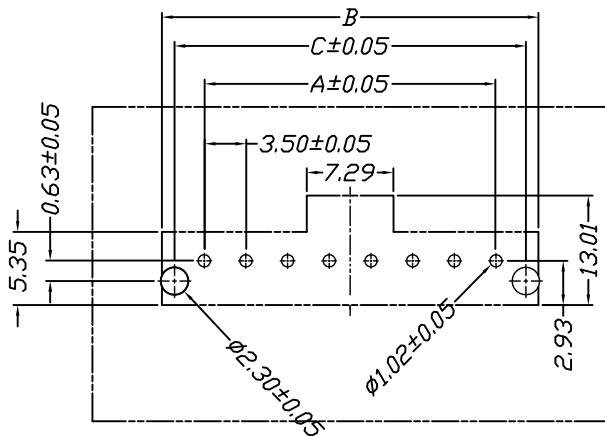
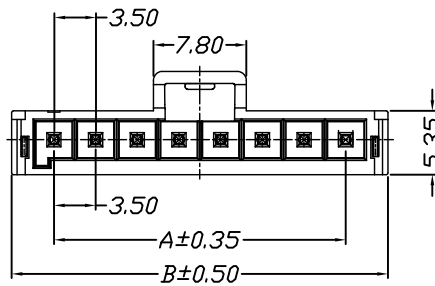
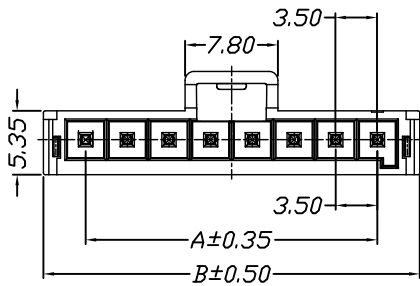
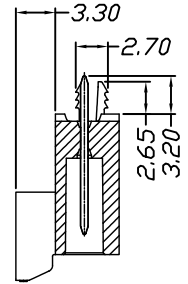
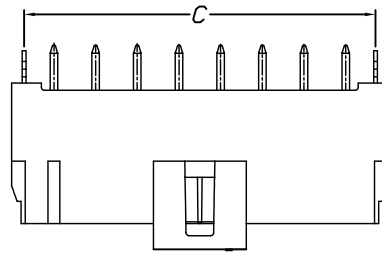


Specifications:  
 Voltage Rating : 250V AC/DC  
 Current Rating : 7A AC,DC  
 Withstand Voltage : 1500V AC/minute  
 Contact Resistance : 40mΩ(MAX.)  
 Insulation Resistance : 1000MΩ(MIN.)  
 Temperature Range : -40°C~+120°C

STP43501W01-NP\*-B2-\*\*



STP43501W01-NP\*-B2-\*\*



P.C.B. LAYOUT

Poles	Dimensions		
	A	B	C
2P	3.50	10.60	8.50
3P	7.00	14.10	12.00
4P	10.50	17.60	15.50
5P	14.00	21.10	19.00
6P	17.50	24.60	22.50
7P	21.00	28.10	26.00
8P	24.50	31.60	29.50

Material	Color	PIN Material
LCP	Black	Brass/Tin-plated

	GENERAL TOLERANCES		SCALE: 1:1	NAME	DATE	深圳市思拓展电子有限公司 SHENZHEN SINOTOP ELECTRONICS CO., LTD 公司网址: www.szstuo.cn 公司电话: 0755-23765350 邮箱: 2850175982@qq.com 公司传真: 0755-23765341	PART NO:
	LINEAR	ANGLES	APPROVED				STP43501W0X-NPX-B2-XX
	0.0±0.35	X° REF±6°	DESIGNER				DWG. NO:
	UNIT: MM	0.00±0.25	X° ±3°	DRAWN	肖坤权		2017.06.16
SIZE: A4	0.000±0.15	X° X'±2°				TITLE:	SHEET: 1/1
						3.50mm Pitch 180° Single Wafer DIP Type	