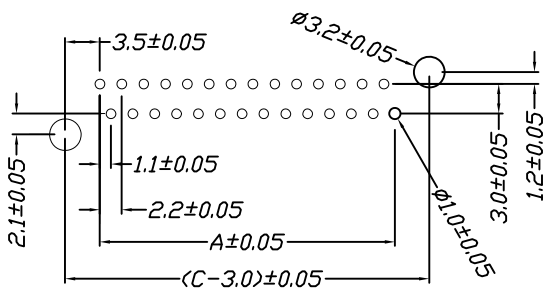
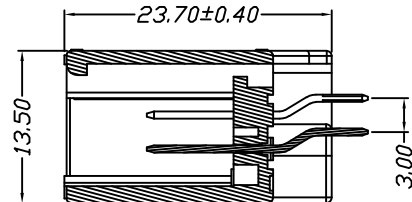
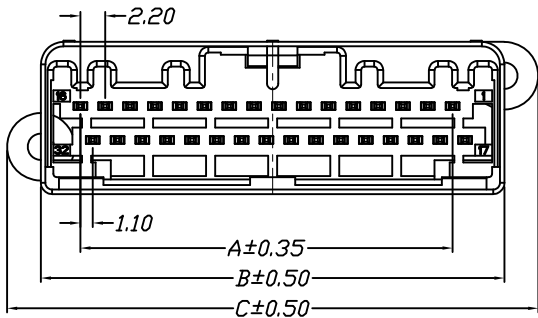
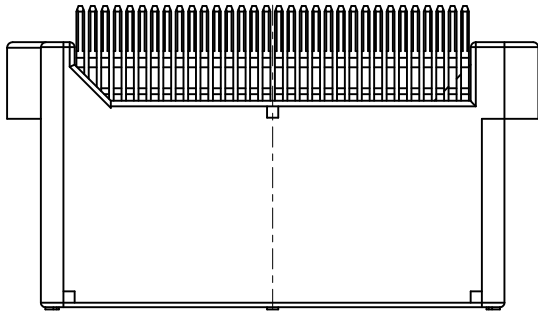
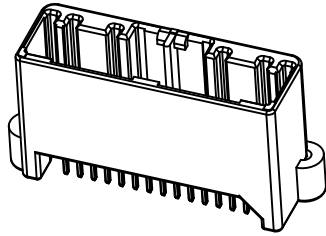


仅供参考

REV.	REVISION RECORD	DATE
A0	新图面发行	2017.06.16

Specifications:
 Voltage Rating : 250V AC/DC
 Current Rating : 3A AC,DC
 Withstand Voltage : 1000V AC/minute
 Contact Resistance : 30mΩ(MAX.)
 Insulation Resistance : 1000MΩ(MIN.)
 Temperature Range : -40°C~+85°C



P.C.B. LAYOUT

Poles	Dimensions		
	A	B	C
2*6P	11.00	19.10	25.10
2*8P	15.40	23.50	29.50
2*10P	19.80	27.90	33.90
2*12P	24.20	32.30	38.30
2*14P	28.60	36.70	42.70
2*16P	33.00	41.10	47.10
2*18P	37.40	45.50	51.50
2*20P	41.80	49.90	55.90

Material	Color	PIN Material
PBT or Nylon	Grey	Brass/Tin-plated

	GENERAL TOLERANCES		SCALE: 1:1	NAME	DATE
	LINEAR	ANGLES	APPROVED		
0.0±0.35	X° REF±6°	DESIGNER			
UNIT: MM	0.00±0.25	X° ±3°	DRAWN	肖坤权	2017.06.16
SIZE: A4	0.000±0.15	X° X'±2°			

STP 深圳市思拓展电子有限公司
 SHENZHEN SINOTOP ELECTRONICS CO., LTD
 公司网址: www.szstuo.cn 公司电话: 0755-23765350
 邮箱: 2850175982@qq.com 公司传真: 0755-23765341

PART. NO:	STP42202W00-2XNPX-A1-XX	
DWG. NO:		
REV:	A0	SHEET: 1/1

TITLE:
 2.20mm Pitch 180° Dula Wafer DIP Type