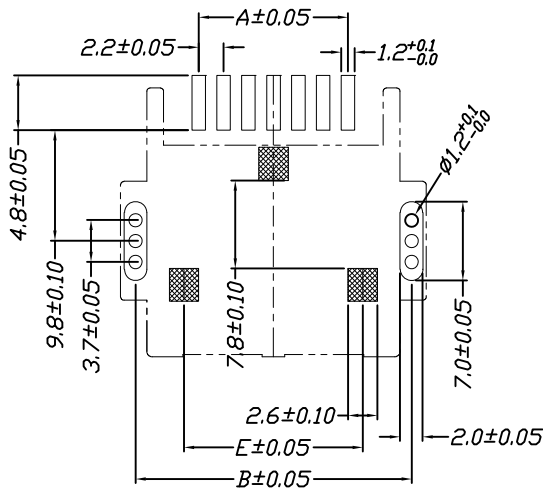
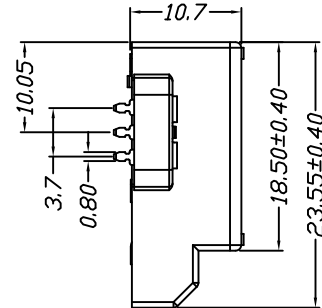
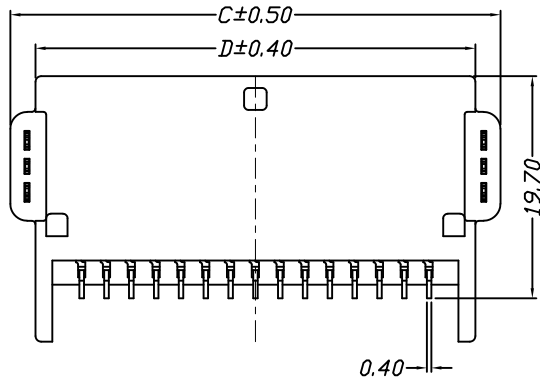
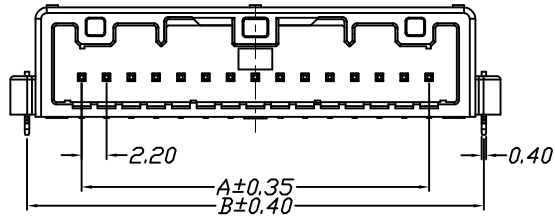
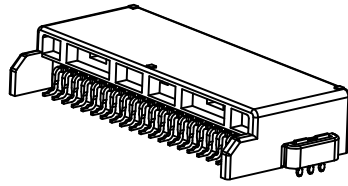


仅供参考

REV.	REVISION RECORD	DATE
A0	新图面发行	2017.06.16

Specifications:
 Voltage Rating : 250V AC/DC
 Current Rating : 3A AC,DC
 Withstand Voltage : 1000V AC/minute
 Contact Resistance : 30mΩ(MAX.)
 Insulation Resistance : 1000MΩ(MIN.)
 Temperature Range : -40°C~+85°C



P.C.B. LAYOUT

Poles	Dimensions				
	A	B	C	D	E
3P	4.40	15.60	18.20	13.60	7.00
5P	8.80	20.00	22.60	18.00	11.40
7P	13.20	24.40	27.00	22.40	15.80
9P	17.60	28.80	31.40	26.80	20.20
11P	22.00	33.20	35.80	31.20	24.60
13P	26.40	37.60	40.20	35.60	29.00
15P	30.80	42.00	44.60	40.00	33.40

Material	Color	PIN Material	Stator Material
PBT or Nylon	Grey	Brass/Tin-plated	Brass/Tin-plated

	GENERAL TOLERANCES		SCALE:	NAME	DATE
	LINEAR	ANGLES	1:1		
	0.0±0.35	X° REF±6°	APPROVED		
UNIT: MM	0.00±0.25	X° ±3°	DESIGNER	肖坤权	2017.06.16
SIZE: A4	0.000±0.15	X° X'±2°	DRAWN		

深圳市思拓展电子有限公司
 SHENZHEN SINOTOP ELECTRONICS CO., LTD
 公司网址: www.szsituo.cn 公司电话: 0755-23765350
 电子邮箱: 2850175982@qq.com 公司传真: 0755-23765341

TITLE:
2.20mm Pitch 90° Single Wafer SMT Type

PART NO:	STP42202W90-NPX-A2-XX	
DWG NO:		
REV:	A0	SHEET: 1/1

A B C D E F G H