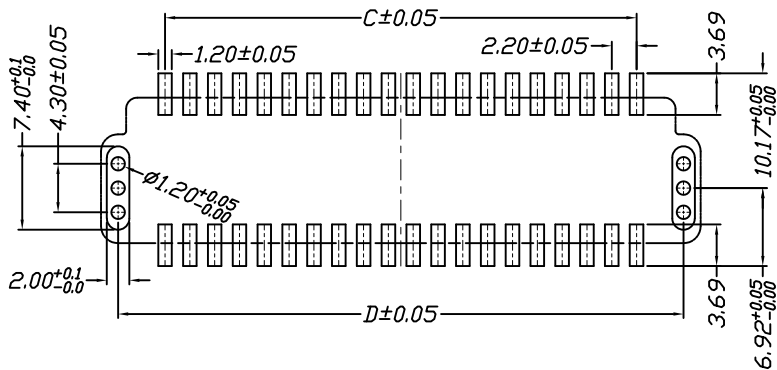
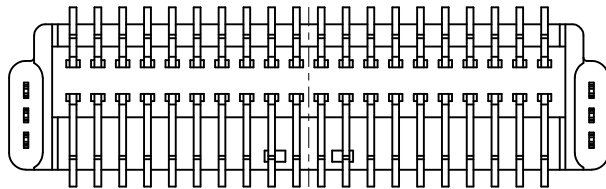
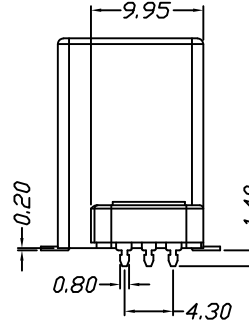
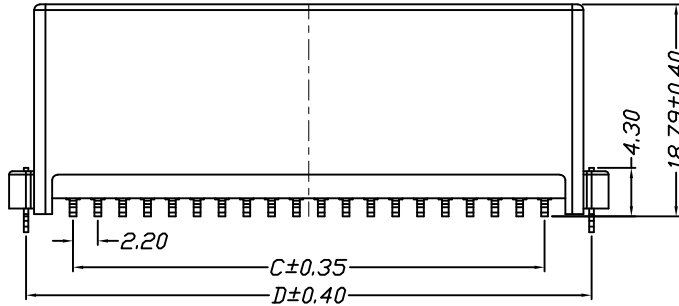
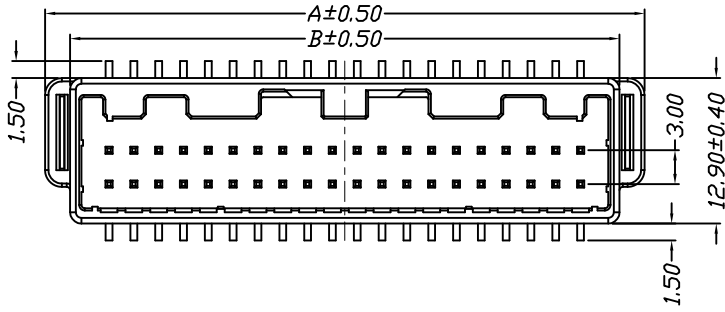
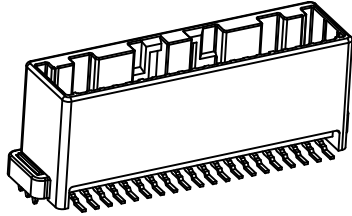


仅供参考

REV.	REVISION RECORD	DATE
A0	新图面发行	2017.06.16

Specifications:
 Voltage Rating : 250V AC/DC
 Current Rating : 3A AC,DC
 Withstand Voltage : 650V AC/minute
 Contact Resistance : 30mΩ(MAX.)
 Insulation Resistance : 1000MΩ(MIN.)
 Temperature Range : -40°C~+85°C



P.C.B. LAYOUT

Poles	Dimensions			
	A	B	C	D
2*4P	17.95	13.50	6.60	14.93
2*6P	22.35	17.90	11.00	19.33
2*8P	26.75	22.30	15.40	23.73
2*10P	31.15	26.70	19.80	28.13
2*12P	35.55	31.10	24.20	32.53
2*14P	39.95	35.50	28.60	36.93
2*16P	44.35	39.90	33.00	41.33
2*20P	53.15	48.70	41.80	50.13

Material	Color	PIN Material	Stator Material
PBT or Nylon	Black	Brass	Brass/Tin-plated

	GENERAL TOLERANCES		SCALE: 1:1	NAME	DATE
	LINEAR	ANGLES			
	0.0±0.35	X° REF±6°	APPROVED		
UNIT: MM	0.00±0.25	X° ±3°	DESIGNER		
SIZE: A4	0.000±0.15	X° X'±2°	DRAWN	肖坤权	2017.06.16

深圳市思拓展电子有限公司
 SHENZHEN SINOTOP ELECTRONICS CO., LTD
 公司网址: www.szstuo.cn 公司电话: 0755-23765350
 邮箱: 2850175982@qq.com 公司传真: 0755-23765341

PART. NO:	STP42201W00-2XNPX-A2-XX	
DWG. NO:		
REV:	A0	SHEET: 1/1

TITLE:
2.20mm Pitch 180° Dula Wafer SMT Type