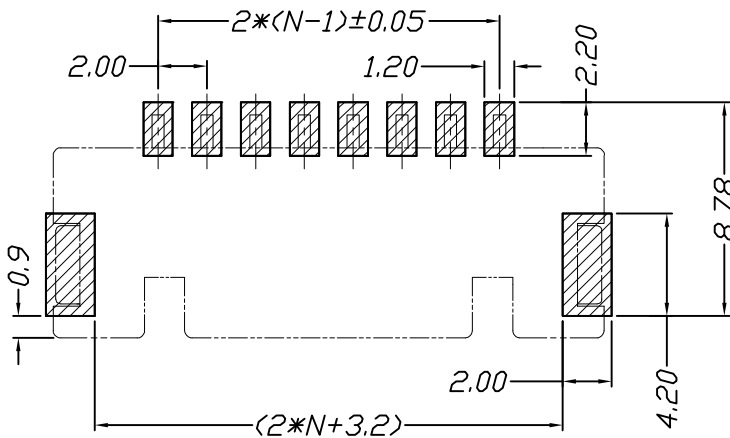
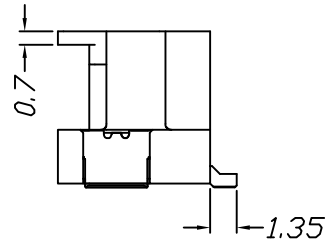
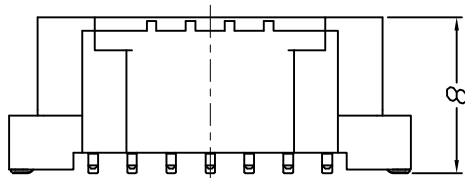
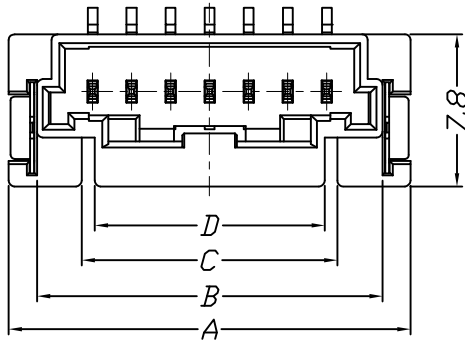
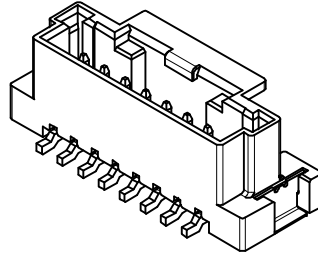


仅供参考

REV.	REVISION RECORD	DATE
A0	新图面发行	2017.06.16

Specifications:  
 Voltage Rating : 125V AC/DC  
 Current Rating : 2A AC,DC  
 Withstand Voltage : 600V AC/minute  
 Contact Resistance : 40mΩ(MAX.)  
 Insulation Resistance : 1000MΩ(MIN.)  
 Temperature Range : -40°C~+105°C



P.C.B. LAYOUT

Poles	Dimensions			
	A	B	C	D
2P	10.90	8.00	-	6.30
3P	12.60	9.70	6.00	5.80
4P	14.60	11.70	8.00	7.80
5P	16.60	13.70	10.00	9.80
6P	18.60	15.70	12.00	11.80
7P	20.60	17.70	13.10	11.80
9P	24.60	21.70	17.10	11.80
10P	26.60	23.70	19.10	11.80
11P	28.60	25.70	21.10	11.80
12P	30.60	27.70	23.10	11.80
13P	32.60	29.70	25.10	11.80
14P	34.60	31.70	27.10	11.80
15P	36.60	33.70	29.10	11.80

Material	Color	PIN Material
PBT or Nylon	Black	Brass

	GENERAL TOLERANCES		SCALE: 1:1	NAME	DATE	深圳市思拓展电子有限公司 SHENZHEN SINOTOP ELECTRONICS CO., LTD 公司地址: WWW.SZSITUA.COM 公司电话: 0755-23765350 邮箱: 2850175982@qq.com 公司传真: 0755-23765341	PART. NO: STP42012W00-NPX-A1-XX
	LINEAR	ANGLES	APPROVED				DWG. NO:
UNIT: MM	0.0±0.35	X° REF±6°	DESIGNER			TITLE: 2.00mm Pitch 180° Wafer SMT Type	REV: A0 SHEET: 1/1
SIZE: A4	0.000±0.15	X° X'±2°	DRAWN	肖坤权	2017.06.16		