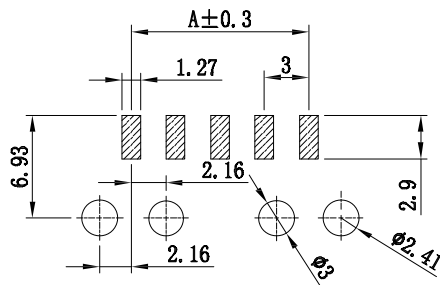
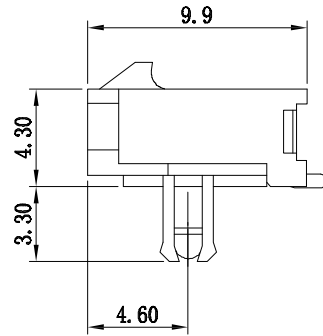
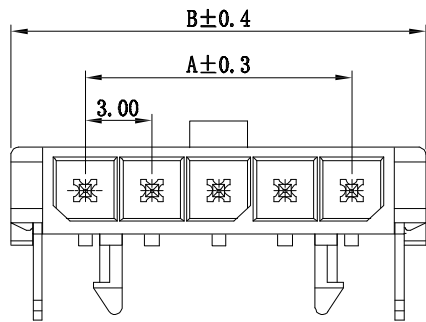
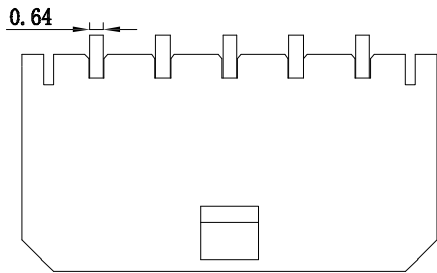


仅供参考

REV.	REVISION RECORD	DATE
A0	新图面发行	2017.06.16

Specifications:

Contact resistance:  $\leq 20\text{m}\Omega$   
 Insulation resistance:  $\geq 1000\text{M}\Omega$   
 Rated voltage: 250V AC DC  
 Rated current: 5.0A AC DC  
 Withstand Voltage: 1000V AC/minute  
 Temperature Range:  $-25^{\circ}\text{C} \sim +85^{\circ}\text{C}$



P. C. B LAYOUT

Poles	Dimensions mm	
	A	B
2	3.00	9.7
3	6.00	12.7
4	9.00	15.7
5	12.00	18.7
6	15.00	21.7
7	18.00	24.7
8	21.00	27.7
9	24.00	30.7
10	27.00	33.7
11	30.00	36.7
12	33.00	39.7

3	Press-fit	Brass Tin	2
2	Contact	Brass Tin	N
1	Housing	LCP(UL94V-0)	1
序号	图号	名称	材料 数量 附注

	GENERAL TOLERANCES		SCALE: 1:1	NAME	DATE	深圳市思拓展电子有限公司 SHENZHEN SINOTOP ELECTRONICS CO., LTD 公司网址: www.szstuo.cn 公司电话: 0755-23765350 邮箱: 2850175982@qq.com 公司传真: 0755-23765341	PART. NO:
	LINEAR	ANGLES	APPROVED				ST-WF-300-001AWLC
	0.0±0.30	X° REF±6°	DESIGNER				DWG. NO:
	UNIT: MM	0.00±0.20	X° ±3°	DRAWN	肖坤权		2017.06.16
SIZE: A4	0.000±0.10	X° X'±2°					REV: A0 SHEET: 1/1